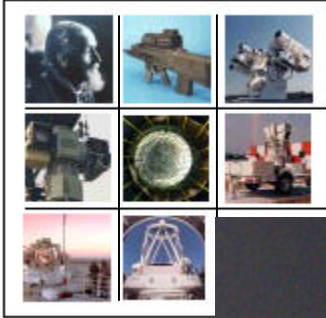


Axis Converter Module



Axis Converter Module Enables Easy Upgrades



Brashear Axis Converter

- The Axis Converter is a compact, two channel, state of the art, digital, high performance transducer interface module for rotary and linear Inductosyn[®]/resolver applications.
- Provides two complete R/D (resolver to digital) interfaces for every combination of two transducers. Also provides additional I/O for gyros, switches, etc.
- Low noise, easy installation, cleaner interfaces, and simplified cable installations when mounted “on-axis” are all achieved using on board signal processing and digital output. Output is a serial asynchronous data stream and can be triggered with an internal time clock or with an external strobe.
- Axis converter module power supply provides DC to DC converter for complete isolation and low noise operation.
- R/D resolution can be fixed at 10, 12, 14, or 16 bits for each channel independently. In addition, R/D resolution can be changed “on the fly” using a half-duplex data channel. (External trigger is required for this operation.)
- System is configurable by jumpers and resistor/capacitor values. Custom software available for difficult applications.
- Ideal candidate for field upgrades due to its small size, fully self-contained, and simple serial output. Field proven in harsh environments.
- Available as an individual component for OEM applications or as part of a full, turn-key Brashear control system.

 **BRASHEAR LP**

Axis Converter Module

Axis Converter Module Specifications

Dimensions:

Height	2.3 in.
Width	3.0 in.
Length	4.9 in.
Weight	1.7 lb (0.77 kg)

Environmental:

Operating Temp.	-20 to +60 deg C
Humidity	Non-condensing relative to 95%

Positioning:

(Based upon 7-in, 128 speed Inductosyn[®] @ 14 bits resolution)

Range	Complete circle encoding
Resolution	0.62 arc sec
Accuracy	+/- 2 arc sec (with deterministic encoder error correction employed)

Interface:

Electronic:	RS 422/RS485, 1Mbaud asynchronous
Power:	28 VDC (18-36 VDC)
Position Input:	2 Inductosyn [®] /Resolver channels (1 channel with velocity output)
Analog Inputs:	2 channels, +/- 10 volts (Scaling Adjustable)
Digital Inputs:	4 contact inputs

Inductosyn[®] is a registered trademark of Ruhle Companies



Brashear Kineto Tracking Mount



Lightweight Shipboard Electro-Optical System

 **BRASHEAR LP**

615 Epsilon Drive
Pittsburgh, PA 15238
Phone: 412-967-7700
Fax: 412-967-7973
e-mail: sales@brashearlp.com
www.brashearlp.com