

T-38C Cockpit Display System



10.4" AMLCD Primary Flight Display

- High Resolution XGA - 125 CGPI, 8-bit color display
- Hemispherical, high contrast $\pm 60^\circ$ viewing angle
- Luminance range from 0.03 to 280fL w/NVIS option
- Multiple video, analog, discrete, synchro, resolver, bus interface options



6.4" AMLCD Electronic Engine Display

- High Resolution 125 CGPI, 6-bit color display
- Hemispherical, high contrast $\pm 60^\circ$ viewing angle
- Luminance range from 0.03 to 280fL w/NVIS option
- Multiple video, analog, discrete, synchro, resolver, bus interface options



communications
Display Systems

Call L-3 First!

Specifications

10.4" AMLCD, Primary Flight Display

Optical Performance

Viewable Area: 6.3" x 8.4"
Addressability: Flexible Autoscaling
Resolution: 1024 x 768, 125 CGPI (XGA)
Gray Levels: 256 gray shades
Luminance: 0.03 fL to 280+ fL
Viewing Angles: ±60°H/V
Contrast Ratio: Greater than 8:1 over entire viewing cone
NVIS: Gen. III, Type I/II, Class A/B

Functional Description

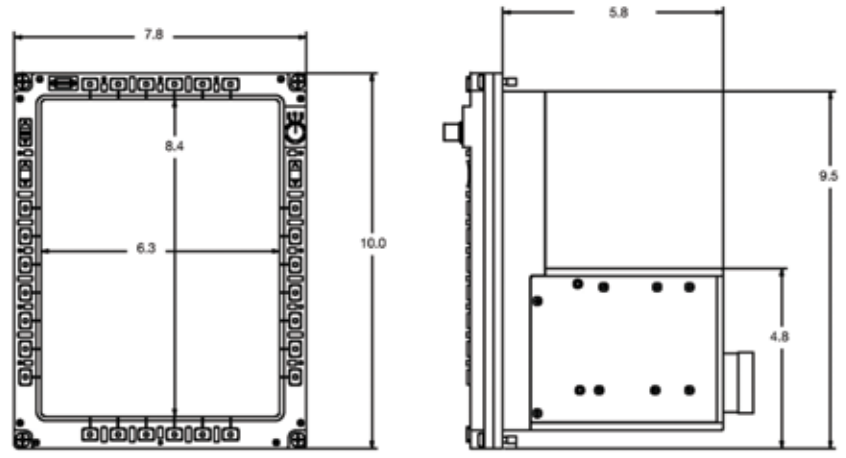
Video Interface: RS-170/RGB-G Digital
 RS-343 (875 line) Digital
Signal Interfaces: ARINC 429/419/575 (6/2) or MIL-STD-1553B
 ARINC 453/708A (2)
 ARINC 561/568 (2)
 RS-232/422/485 (2)
 Discretes 30/8 (Configurable)
 Analogs (40/7)

Physical Description

Dimensions: 7.8"w x 10"h x 5.8"d
Weight: Nominal 8.0 lbs.
Cooling: Internal Fan
Primary Power: 28 VDC, 5V Bezel
 88 Watts Maximum
Mounting: Adaptable
Bezel Config.: EFIS, MFD, Custom

Environmental Performance

Temperature:
 - Operating -54°C to +71°C
 - Storage -57°C to +85°C
Shock: 15G op, 30G CS
Vibration: 514.4 Cat4, Prl
 MIL-STD-810C
Altitude: 70,000 ft.
Reliability: 7,000 Hours MTBF
EMI/EMC: MIL-STD 461/463



6.4" AMLCD, Electronic Engine Display

Optical Performance

Viewable Area: 5.1" x 3.8"
Addressability: Flexible Autoscaling
Resolution: 125 RGB CGPI
Gray Levels: 64 gray shades
Luminance: 0.03 fL to 280+ fL
Viewing Angles: ±60°H/V
Contrast Ratio: Greater than 8:1 over entire viewing cone
NVIS: Gen. III, Type I/II, Class A/B

Functional Description

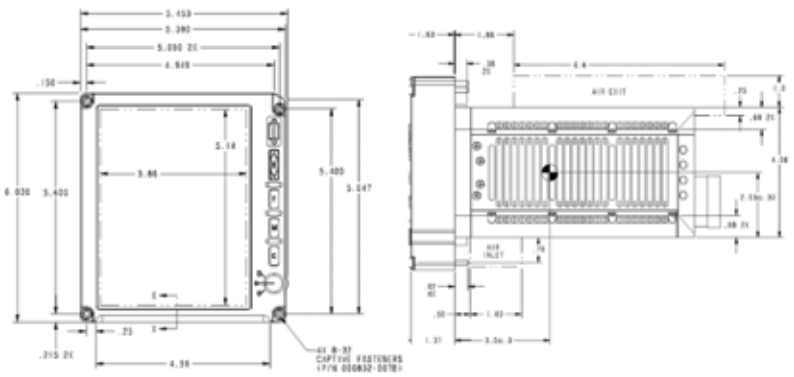
Video Interface: RS-170/RGB-G
 RS-343 (875 line) Digital
Signal Interfaces: ARINC 429/419/575 (6/2) or MIL-STD-1553B
 ARINC 453/708A (2)
 ARINC 561/568 (2)
 RS-232/422/485 (2)
 Discretes 30/8 (Configurable)
 Analogs (40/7)

Physical Description

Dimensions: 6.1"w x 5.1"h x 7"d
Weight: Nominal 7.0 lbs.
Cooling: Internal Fan
Primary Power: 28 VDC, 5V Bezel
 56 Watts Maximum
Mounting: Adaptable
Bezel Config.: EFIS, MFD, Custom
 Landscape/Portrait

Environmental Performance

Temperature:
 - Operating -54°C to +71°C
 - Storage -57°C to +85°C
Shock: 15G op, 30G CS
Vibration: 514.4 Cat4, Prl
 MIL-STD-810C
Altitude: 70,000 ft.
Reliability: 7,000 Hours MTBF
EMI/EMC: MIL-STD 461/463



1355 Bluegrass Lakes Parkway
 Alpharetta, GA 30004
 (770)752-7000 L-3Com.com/Displays

This material is in the public domain and may be reprinted without permission; citation of this source is appreciated. "Cleared for Public Release by Directorate for Freedom of Information and Security Review (DFOISR), dated 4 Apr 00, reference No. 00-S-1346."

This material is in the public domain and may be reprinted without permission; citation of this source is appreciated. "Cleared for Public Release by Directorate for Freedom of Information and Security Review (DFOISR), dated 4 Apr 00, reference No. 00-S-1342."