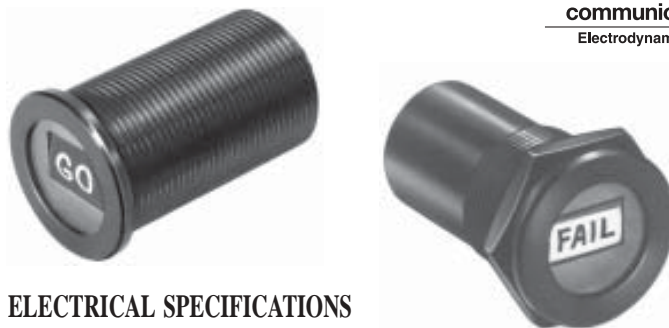




BITE Indicators

Latching or Self-Restoring

Model MI 61 Series



FEATURES

- Environmentally Sealed
- Choice of Self-restoring or Magnetic Latching Types
- Optional Legend Display

The MI 61 series magnetic latching fault indicator displays a highly visible dual color drum when the indicator coil is pulsed by a BITE (Built-In Test Equipment) system. The drum provides a high contrast visual indication and an effective warning of system faults. The drum can accommodate a legend such as "GO" or "FAIL" when specific information needs to be displayed.

OPERATION

When the indicator coil is energized with a 50 millisecond or longer pulse, the drum rotates to display the message or system status.

Model MI 61M is a self-restoring, steady-state indicator that automatically returns to a neutral state when power is removed. It does not latch to the core magnet, but remains suspended in the position until power is removed. Self-restoring, steady-state indicator.

Models MI 61L & MI 61LD are latching indicators that remain magnetically latched to the core in the position last pulsed.

For MI 61L reset to the "no-fault" position is accomplished electrically by reversing the polarity of the pulse.

For the MI 61LD, a dual coil device, reset to the "no-fault" position is accomplished electronically by pulsing the reset coil.

ELECTRICAL SPECIFICATIONS

Standard Coil Voltages and Resistance:

Resistance \pm 10% shown at 25°C.

DC Voltage	3	5	6	12	24	28
Resistance (Ohms)	6	20	24	103	385	520

Power: Steady state for model MI 61 - 1.5 watts.

Pulse Power for Latching Models: 1.5 watts, minimal.

Pulse Length for Latching Models: 50 ms min.

Dielectric Withstanding Voltage: 500 volts DC case to terminals.
100 VDC coil to coil on dual coil units.

Insulation Resistance: 100 megohms minimum at 500 VDC.

MECHANICAL SPECIFICATIONS

Case: Black, anodized aluminum with sealed glass window.

Mounting: Front panel mount.

Weight: 20 grams maximum.

Display Colors: Any combination of: Black (Blk), White (W), and Day Glow* colors: Red (R), Orange (O), Yellow (Y), and Green (G).

Legend: Available maximum letter height 1/8".

Hardware: Units supplied with hex nut.

ENVIRONMENTAL SPECIFICATIONS

Operating Temperature Range: -65°C to +125°C.

Vibration:** 10 G's, 10 to 2kHz, MIL STD 202.

Shock: 50 G's - MIL STD 202, Method 213, Condition I.

Humidity: 95% relative humidity MIL STD 202, Method 103, Test Condition B.

Salt Spray: MIL STD 202, Method 101, Test Condition B.

Thermal Shock: MIL STD 202, Method 107, Test Condition A.

Barometric Pressure: 100,000 ft. MIL STD 202, Method 105, Test Condition D.

Operational Life: 10,000 cycles minimum.

*Day-Glow Color Corp.

**During vibration testing, caution should be taken to shield the indicator from the strong magnetic field.

Covered by U.S. & Foreign Patents.

ORDERING INFORMATION

When ordering, show model number first, then coil voltage desired, then the color combination desired. If this is a special part, factory assigned modification number will be added at the end of the ordering number.

Example:

Dual coil magnetically latching unit for 24 volts with black for the fault color and red for reset color would be: Model MI 61LD-24-Blk/R

MI 61LD - 24 - Blk / R - S

Basic Model Number	Coil Voltage	Fault or Set Color	Reset Color	Factory Modification Number if Special
MI61M	3	(R) Red	(R) Red	S.+ ID No.
MI 61L	5	(W) White	(W) White	
MI 61LD	6	(Blk) Black	(Blk) Black	
	12	(G) Green	(G) Green	
	24	(Y) Yellow	(Y) Yellow	
	28	(O) Orange	(O) Orange	

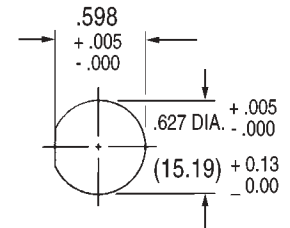
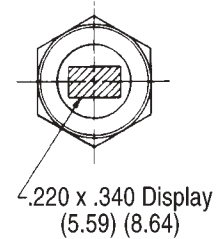
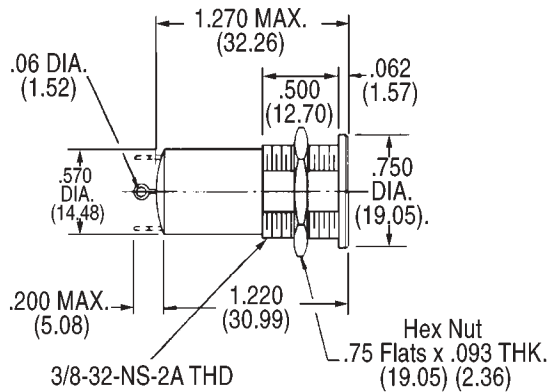
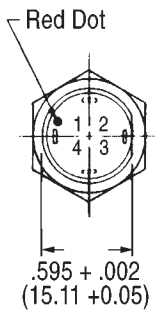


BITE Indicators

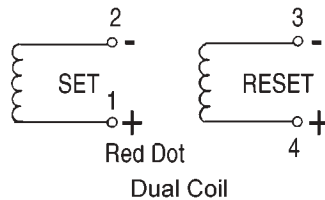
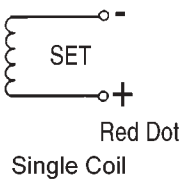
Latching or Self-Restoring Model MI 61 Series



FLAG INDICATORS



Numbers are for Reference Only.



Panel Cut-out

NOTE:

Dimensions in () are mm. Tolerances: Decimals: $\pm .010$ (0,25), Fractions: $\pm 1/64$ —All mounting hardware is black anodized aluminum. Mounting Torque: 5-7 in. lbs.