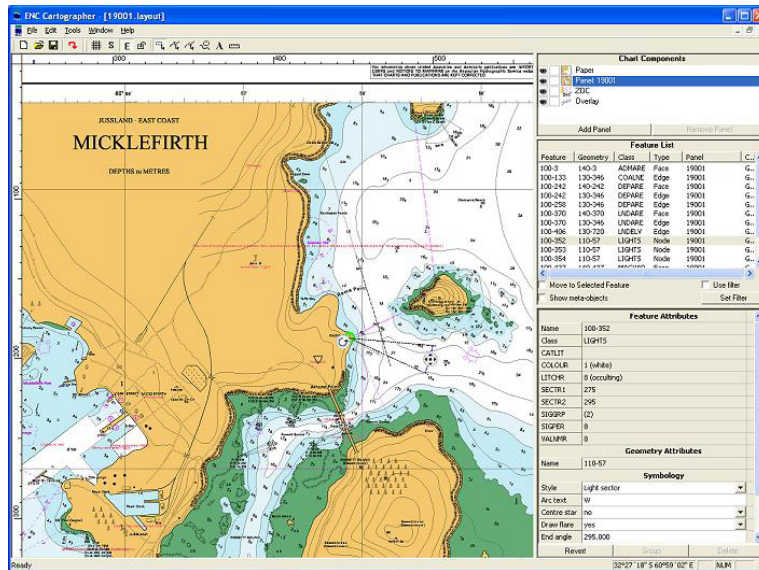


### ENC CARTOGRAPHER



ENC Cartographer interface: scheme paper charts from one or more ENCs (Micklefirth chart used with the permission of the UK Hydrographic Office)

#### PRODUCT DESCRIPTION

ENC Cartographer is the latest member of the L-3 Nautronix and SevenCs ENC Tools family, giving you the ability to create and maintain INT1/INT2 compliant paper charts from your S-57 ENC data source.

Considerable effort goes into the compilation, encoding and quality control of an ENC. ENC Cartographer allows you to offer a raster/paper product to your customers as well the ability to keep the two products closely aligned. ENC Cartographer can be used in your chart production and maintenance facility to create special purpose high or low run products that can be saved as a TIFF, SVG or Bitmap format or sent directly to a plotter/printer.

ENC Cartographer loads S-57 base and update cells so it can be operated as a stand alone application or an integrated member of the ENC Tools suite.

#### KEY FEATURES

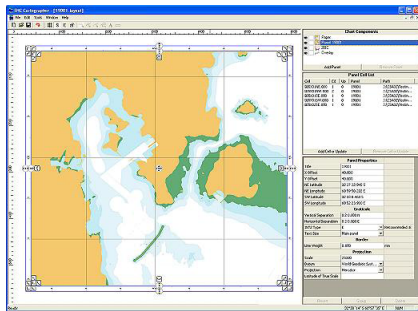
- Derive an INT1/INT2 paper chart from one or more S-57 ENC cells
- Define multiple panels for a paper chart
- Creation of Zones of Confidence (ZOC) diagrams using S-57 quality objects
- Graphically define extents and location of inserts/plans
- Support of INT2 borders and graticules
- Generation of marginalia and text
- Tidal stream tables, compass roses derived from S-57 objects
- Default mappings can be overridden and customised
- Powerful search and selection filter
- Comprehensive mapping rules from ENC to INT1
- Support for ENC updates
- Generate chart mock ups from M\_SREL Meta objects



# L-3 Nautronix

## ENC TOOLS

### ENC CARTOGRAPHER



ENC Cartographer's scheming mode

Producing a paper chart using ENC Cartographer begins with the scheming process. This allows the scale, projection, plans and/or insets to be laid out and populated with the relevant ENC or ENCs.

Once the layout is set, the paper chart symbology is created automatically, then the editing mode enables finer cartographic editing that cannot be automated.

Although the paper chart symbology is created automatically, the finer cartographic editing that is difficult if not impossible to automate is carried out using edit mode.

The cartographic editing may entail better placement of text so as to not obscure other features, creation of depth contour values, the inclusion of Tidal Streams Table (generated from values encoded in the TS\_PAD object) or the correction of line symbology due to a line being captured the wrong way in the source ENC.

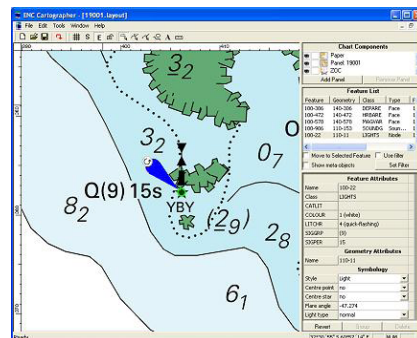
All changes to symbology can be reverted back to the default mapping as generated from the ENC at any time. Editing done on the base ENC is recognised in ENC Cartographer and those changes can be incorporated or rejected.

At any stage of editing the paper chart may be exported as a TIFF, SVG or Bitmap file, converted to a PDF or sent to a plotter.

If you are using an application such as ENC Designer to build or maintain ENCs the raster image of the paper chart can be loaded as a backdrop, allowing the final paper product to be checked against the ENCs it was derived from.

ENC Cartographer is the paper chart production and maintenance component of the ENC Tools suite. It is distributed worldwide by SevenCs and L-3 Nautronix.

Contact the L-3 Nautronix Sydney office for a free demonstration version. This version is locked to the UK Hydrographic Office's Micklefirth ENCs/chart.



ENC Cartographer's Edit mode allowing groups or individual objects to be selected and edited. The S-57 naming convention is retained in ENC Cartographer allowing easy cross reference with the source ENC.

#### Minimum recommended configuration

- Microsoft Windows 2000/XP
- Intel P4 processor 2 GHz (3+GHz optimal)
- 512 MB RAM (1 GB optimal)
- 20 GB disk storage for applications and data
- 256 MB OpenGL 2.1 Video card

#### L-3 Nautronix

Perth Office:  
108 Marine Terrace  
Fremantle  
Western Australia, 6160  
Australia  
Tel: +61 8 9431 0000  
Fax: +61 8 9430 5901  
www.L-3Com.com/Nautronix

Sydney Office:  
Level 1,  
121 Walker Street,  
North Sydney  
New South Wales, 2060  
Australia  
Tel: +61 2 9957 3549  
Fax: +61 2 9959 3594



Nautronix