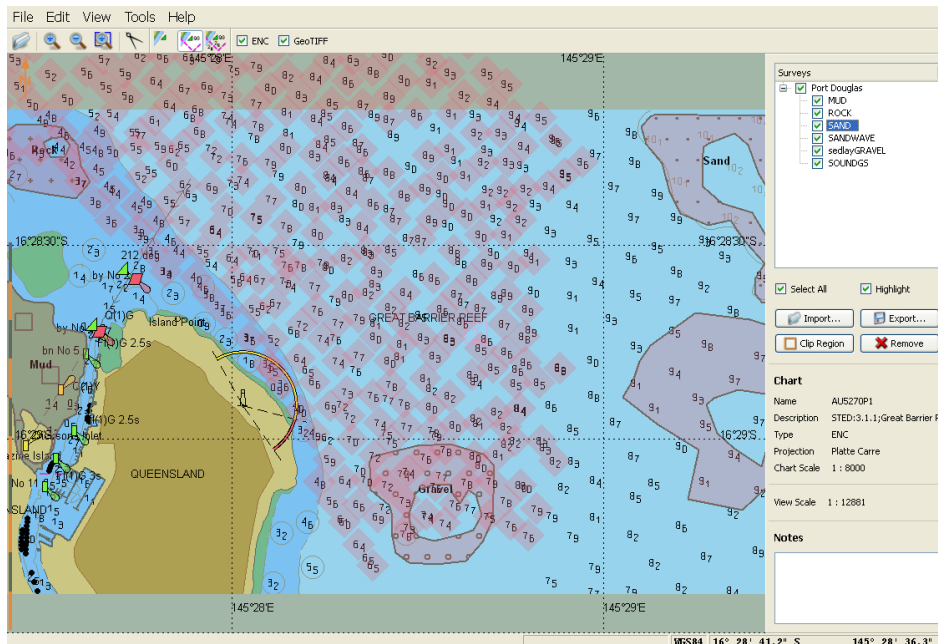


SURVEY DATA COMPILER



Survey Data Compiler Interface

PRODUCT DESCRIPTION

The Survey Data Compiler (SDC) is primarily a conversion tool that converts XYZ survey data into Electronic Navigational Chart (ENC), Digital Nautical Chart (DNC) and Additional Military Layers (AML) exchange sets.

The application can also load published raster and vector navigation charts as a backdrop, providing a comparison with the converted survey data.

The software has been built to specifically process thinned survey data produced in Fledermaus and handles only the features that are captured or processed by this software.

Features exported from the SDC are a subset of the ENC, DNC and AML electronic chart product specifications.

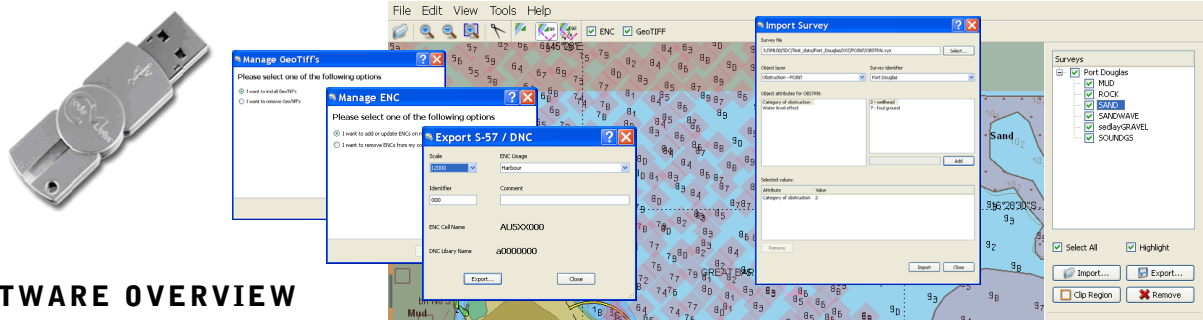
The SDC has been designed to provide a simplified process for the creation of ENC, DNC and AML data for Electronic Chart Display Systems and for the inclusion of this data in tactical navigation charts.

KEY FEATURES

- SDC software displays raster charts as a 'mosaic' allowing different scales and chart products to be displayed together
- Both raster and vector charts are displayed using the WGS84 datum and the Platte Carre projection
- Step by step Wizards for loading and removing ENCs/ENC exchange sets and GeoTIFF charts.
- Imports XYZ and DNC Data
- Exports ENC, DNC and AML data
- Available on Microsoft Windows ® 2000/XP



SURVEY DATA COMPILER



SOFTWARE OVERVIEW

- Installation

Survey Data Compiler is delivered on a CD in a packed form and requires Windows XP.

- Registration

Registration and licensing of the SDC software is carried out utilizing a "CodeMeter" USB dongle supplied by WIBU Systems AG. With the dongle it is possible to use the SDC licence as floating licences on a network. Another advantage of the CodeMeter dongle is the option to update, change and edit licences on the dongle remotely without the need to send the dongle back to HSA Systems.

- SDC Interface

The Survey Data Compilers interface consists of toolbars, chart display, a status bar, survey management and several dialogues for loading and exporting data.

The Survey Date Compiler software displays raster charts as a 'mosaic' allowing different scales and chart products to be displayed together. It is possible to have several charts and chart types displayed in the chart window at once.

Both raster and vector charts are displayed using the WGS84 datum and the Platte Carre projection.

Step by step guides (Wizards) are available from the file menu to handle the loading and removal of ENCs/ ENC exchange sets and GeoTIFF charts. The file menu has an Import Survey dialog that allows the ENC or AML object and attribute combination to be assigned to the XYZ file.

An export S-57/DNC dialog is provided, and sets the scale of the cell from the area the surveys cover at the chart scale.

The export scale is based on scale ranges described in the "AHS Use of the object Catalogue SCAMIN" specification.

The Edit menu provides controls for selecting a region of the survey to export to an electronic chart format and for removing selected object layers or the selected survey.

The SDC interface has a complete range of controls for adjusting viewing parameters (zoom, pan and selective displays) and tools such as Dividers, which measure distance and bearing between two points. The Chart Information Display provides information about the chart at the position of the cursor, and the Status Bar displays the cursor co-ordinates and datum.

L-3 Nautronix

Perth Office:
108 Marine Terrace
Fremantle
Western Australia, 6160
Australia
Tel: +61 8 9431 0000
Fax: +61 8 9430 5901
www.L-3Com.com/Nautronix

Sydney Office:
Level 1,
121 Walker Street,
North Sydney
New South Wales, 2060
Australia
Tel: +61 2 9957 3549
Fax: +61 2 9959 3594



Nautronix